

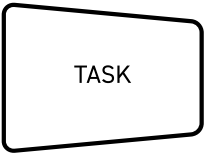
COMMON VISUAL LANGUAGE FOR PRODUCTION

THE SHAPES



ASSET

A physical or digital object or collection of objects specific to the creation of a creative work.



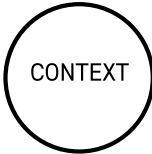
TASK

A piece of work to be done and completed as a step in the production process.



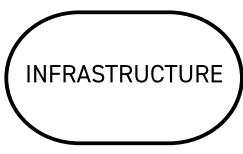
PARTICIPANT

The people, organizations, or services that are responsible for the production of the creative work



CONTEXT

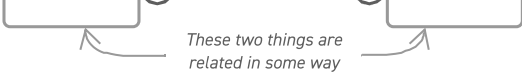
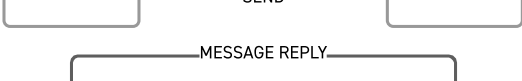
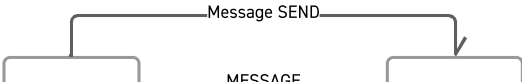
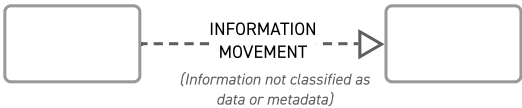
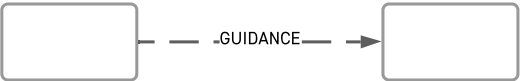
Informs scope within the construction process of a creative work.



INFRASTRUCTURE

The underlying systems and framework required for the production of the creative work

THE MEANING OF LINES

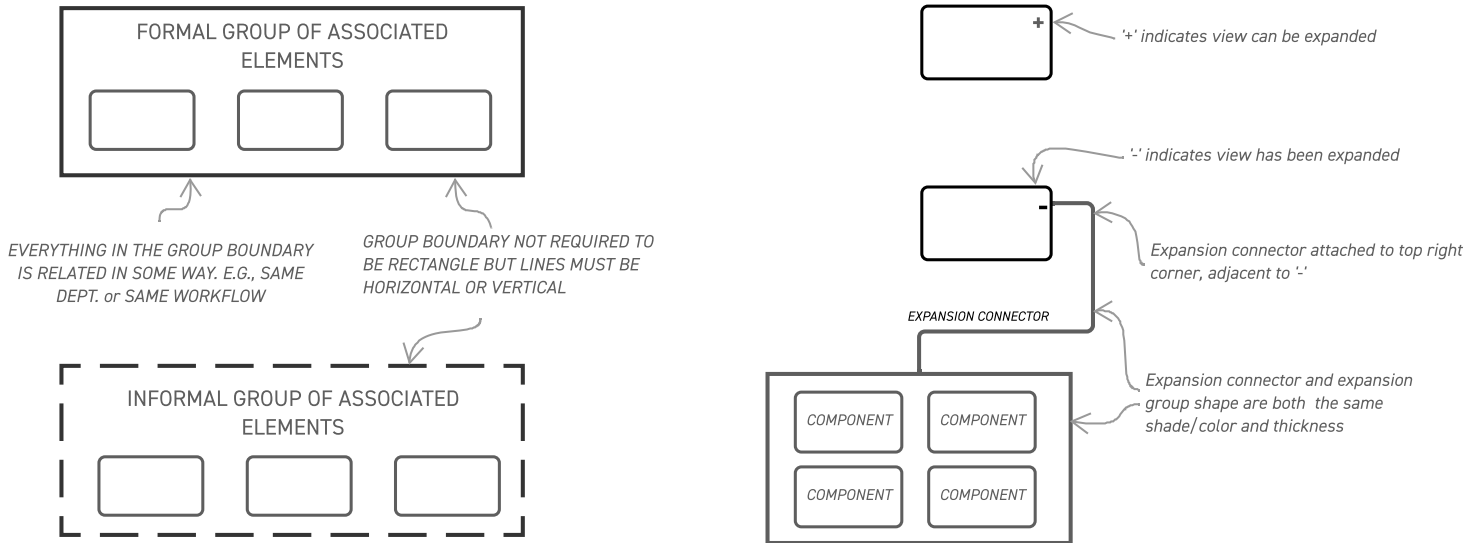


Half arrow is above or right of line for send, below or left of line for reply.

THIS IS A CALLOUT LINE, IT MUST BE CURVED

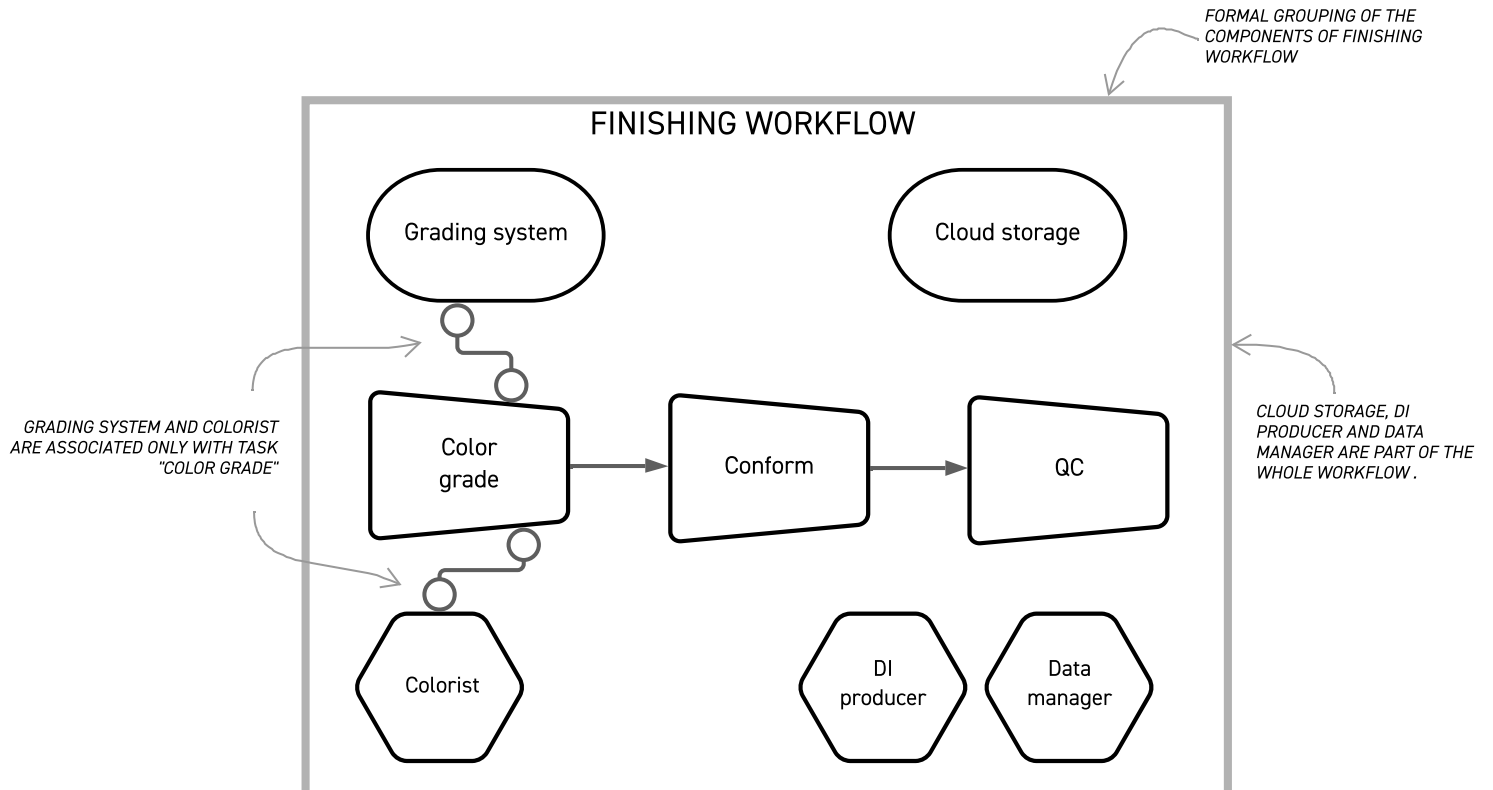
THIS IS A CALLOUT. IT MUST BE ITALICIZED

GROUPING STUFF



ASSOCIATION AND GROUPING APP NOTE

THE ASSOCIATION LINE AND GROUP OF ASSOCIATED ELEMENTS ARE CLOSELY RELATED, FOR EXAMPLE:



ICON APP NOTE

IN LUCIDCHART AND POWERPOINT IT IS ONLY POSSIBLE TO CHANGE THE COLOR OF EITHER AN ICON'S LINE OR ITS FILL. ICONS ARE PROVIDED IN BOTH A FILLED VERSION, WHERE THE COLOR OF THE FILL CAN BE CHANGED, AND UNFILLED VERSION WHERE THE COLOR OF THE LINE CAN BE CHANGED.

TO CHANGE COLOR OF LINE
USE UNFILLED VERSION OF
ICON



*USING FILL COLOR
TOOL CHANGES COLOR
OF LINES*

*USING FILL COLOR
TOOL CHANGES COLOR
OF FILL*

TO CHANGE COLOR OF FILL
USE FILLED VERSION OF ICON



LINE COLOR TOOL PUTS AN OUTLINE
AROUND THE ICON'S LINE IN BOTH
VERSIONS

